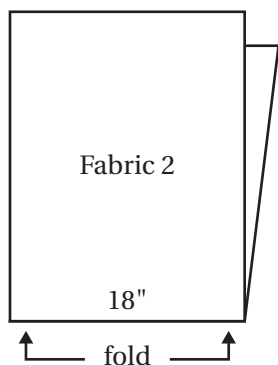
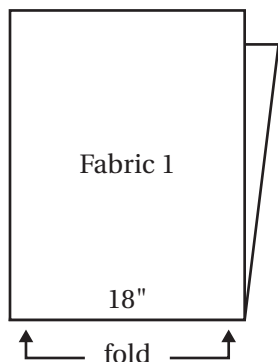




[1]



Grocery Tote

MATERIALS:

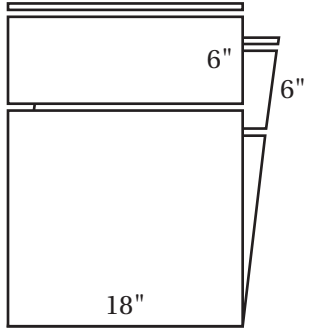
1/2 yard (each) of 2 fabrics
rotary cutter, ruler, thread, pins

DIRECTIONS:

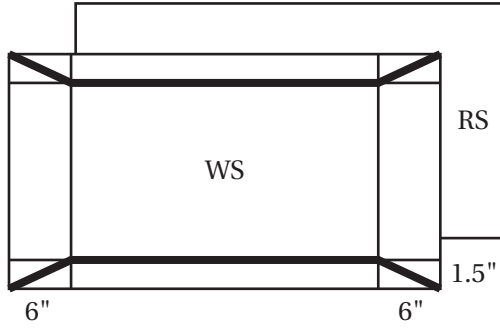
- Using your ruler and rotary cutter, cut 2 fabrics to 18". With fabrics selvedge to selvedge, square up both edges of fabric.
- Trim Selvedges. Cut 6" strips from the short side of each fabric. You will have 4 strips total. Set aside. These will be your straps.
- Fold each of the bag bodies in half, Right Sides together, and stitch up the sides using 1/2" seam allowances. Set aside.
- Take out the 4 fabric strips that you set aside for the straps. Join the 2 strips of the same fabric by placing one on top of the other at a right angle, Right Sides together, matching up raw edges. You will see there is a square formed where the fabrics overlap. Mark a diagonal line from the upper right corner of the square to the bottom left corner. Stitch over this line. Repeat with two other strips.
- Trim the seam allowance and open. Press flat. Draw the following diagram on the Wrong Side of one of the strap pieces.
- Layer the strap fabrics right sides together, and sew over the designated diagram lines. Sew along the sides only. Don't sew the ends closed! Trim excess and turn inside out. Press. Topstitch 1/4" along the long sides.
- Go back to the pieces you set aside for the body of the bag. Choose the fabric that you want on the outside. Turn this piece Right Side out. Baste each of the end of the strap to the side seams of the bag. Place this whole piece inside the other bag piece Right Sides together. Stitch around the top, but be sure to leave a 4" opening.
- Pull the bag Right Side out through the opening. Place one bag inside the other and press. Topstitch around the edge.
- If you'd like to make a gussett, fold each bottom corner of the bag up about 1 1/2". Flatten, making a small triangle. Sew across the base of the triangle. Tack the triangle point to the side seam.

over →

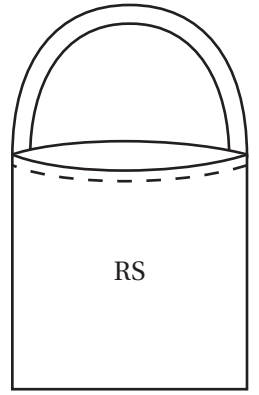
[2]



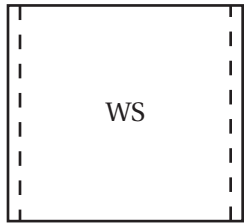
[5]



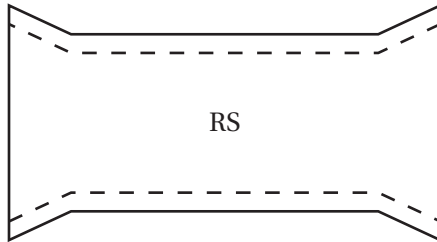
[8]



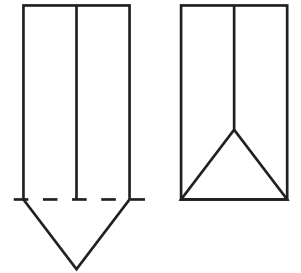
[3]



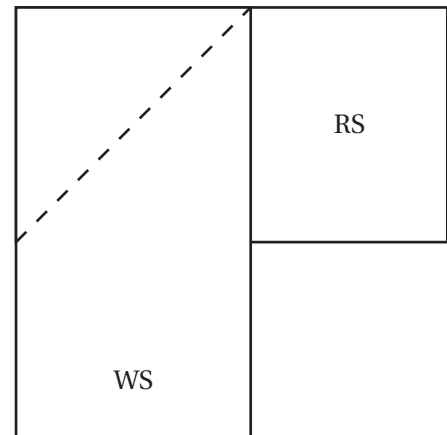
[6]



[9]



[4]



[7]

